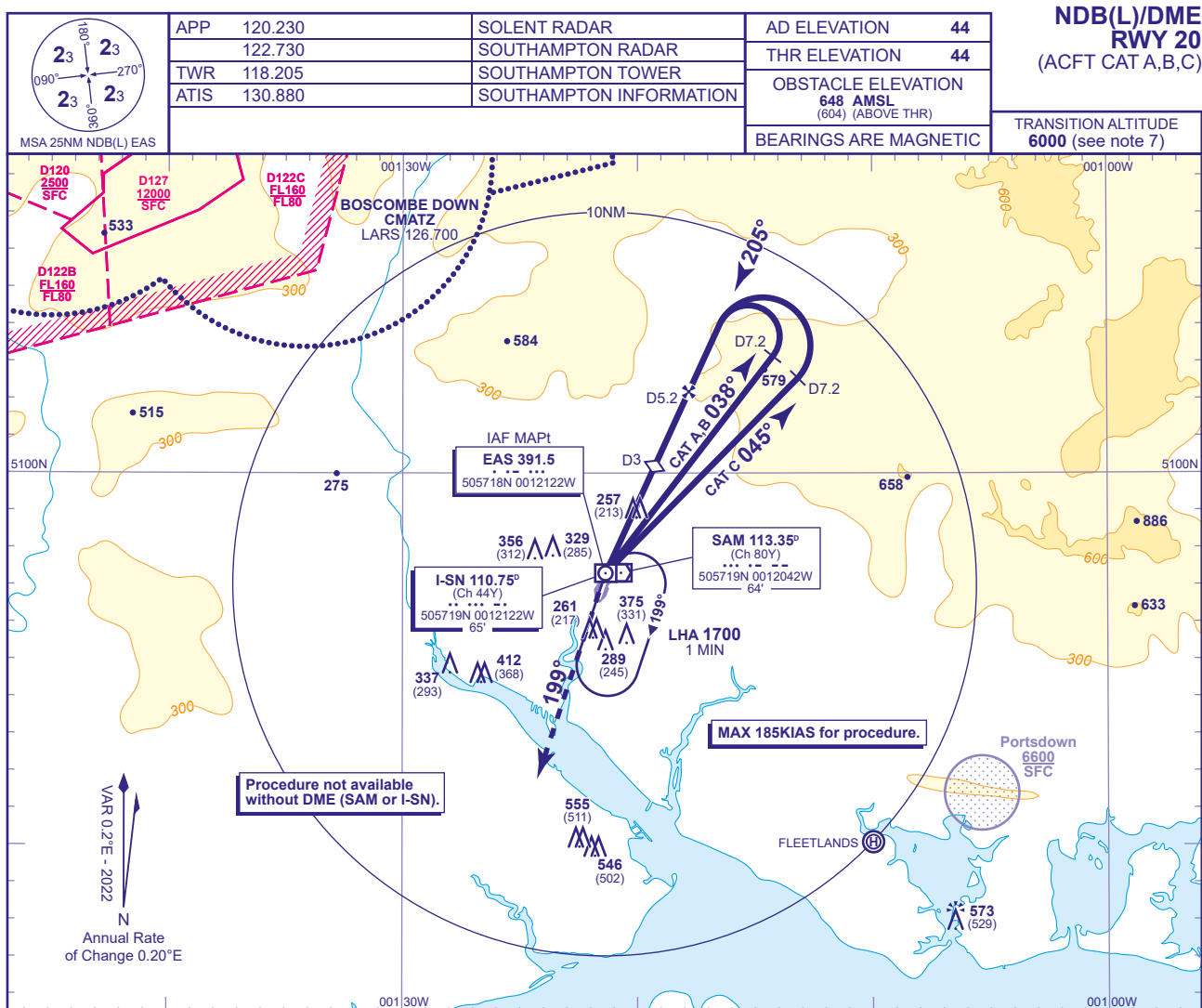
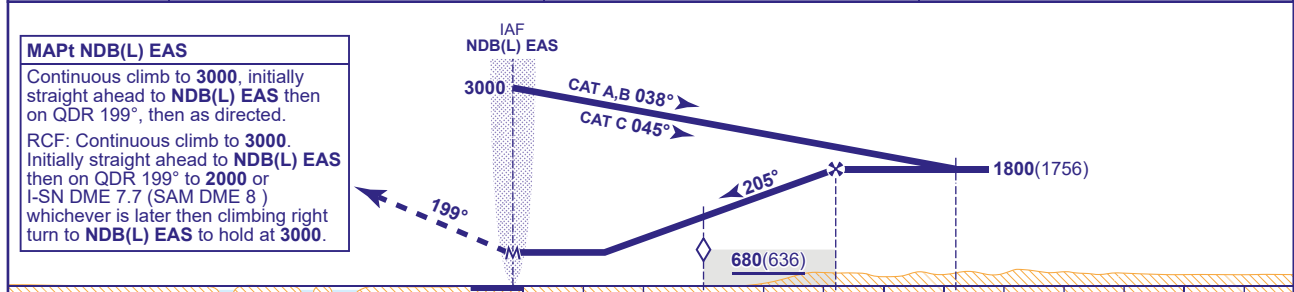


# APPROACH CHART - ICAO

**SOUTHAMPTON**  
**NDB(L)/DME**  
**RWY 20**  
 (ACFT CAT A,B,C)



RECOMMENDED PROFILE Gradient 5.41%, 328FT/NM			
DME I-SN	4	3 (SDF)	2
ALT(HGT)	1410(1366)	1080(1036)	750(706)



Aircraft Category		A	B	C	Rate of descent	G/S KT	160	140	120	100	80
OCA (OCH)	Procedure	560(516)	560(516)	560(516)		FT/MIN	880	770	660	550	440
VM(C)OCA (OCH AAL)	Total Area	680(636)	700(656)	890(846)							

**NOTE 1** Lowest altitude to commence procedure from hold is 2000.  
**NOTE 2** FAT offset 6° from RWY CL and intersects CL 0.8NM (I-SN DME 0.8) before THR.  
**NOTE 3** DME SAM is situated 0.3NM east of THR RWY 20.  
**NOTE 4** DME SAM may be substituted for DME I-SN if required. There are no changes to DME distances when DME SAM is used.  
**NOTE 5** Due to controlled airspace constraints, aircraft may temporarily leave controlled airspace in the base turn. Aircraft being radar vectored to the FAT may not be provided a period of level flight immediately prior to crossing the FAF.  
**NOTE 6** Aircraft will normally be required to hold not lower than 2000.  
**NOTE 7** Outside the Solent CTA notified hours of operation the Transition Altitude is 3000.

**CHANGE (10/22): OBSTACLES REVISED.**